

Probe tips

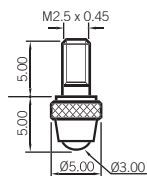
86



1 Type normally fitted to AX Series and tungsten carbide version of feather touch probes

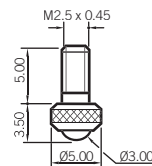
2 Shank of 041676 is narrower and longer than 802605. Tip normally used on linear encoders

3 Type fitted to nylon versions of feather touch probes



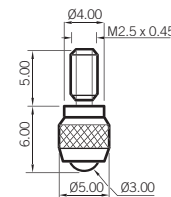
Ø3.00mm Ball

Tip material	Part no.
T.Carbide	804979
Ruby	804807
Nylon	805181
Silicon Nitride	804973



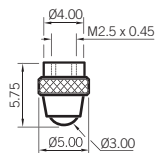
Ø3.00mm Ball

Tip material	Part no.
T.Carbide	802605 ¹
Nylon	803246 ³



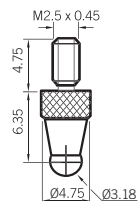
Ø3.00mm Ball

Tip material	Part no.
T.Carbide	041676 ²



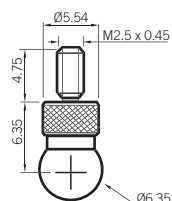
Ø3.00mm Ball

Tip material	Part no.
T.Carbide	804967
Ruby	804966
Nylon	804965
Silicon Nitride	805180



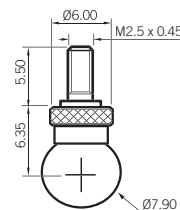
Ø3.18mm Ball

Tip material	Part no.
T.Carbide	008305-004



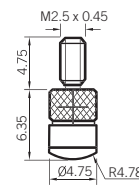
Ø6.35mm Ball

Tip material	Part no.
T.Carbide	008305-005



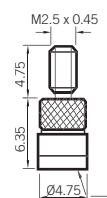
Ø7.90mm Ball

Tip material	Part no.
Ruby	804828



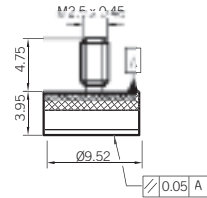
Ø4.75mm Dome

Tip material	Part no.
T.Carbide	008305-034



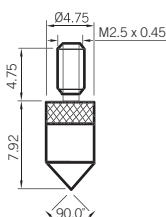
Ø4.75mm Flat

Tip material	Part no.
T.Carbide	008305-033



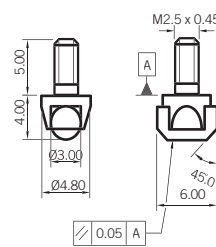
Ø9.52mm Flat

Tip material	Part no.
T.Carbide	008305-007



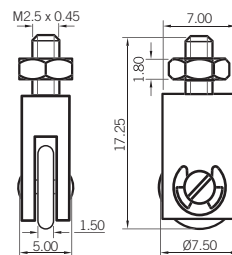
90° Tip

Tip material	Part no.
T.Carbide	008305-003



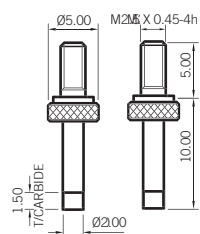
Ø7.90mm Roller

Tip material	Part no.
T.Carbide	008305-030



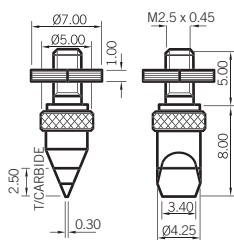
1.5 x Ø7.50mm Wheel

Tip material	Part no.
Steel	008305-027



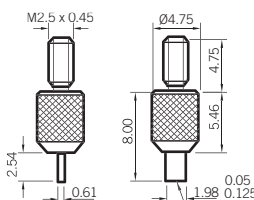
Ø2.00mm Pin

Tip material	Part no.
T.Carbide	206675



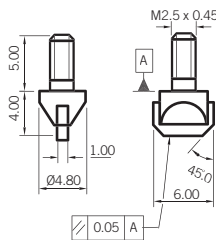
Knife Edge

Tip material	Part no.
T.Carbide	206674



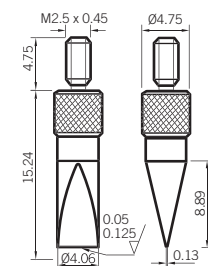
0.6 x 2mm Blade Edge

Tip material	Part no.
T.Carbide	008305-035



1 x 6mm Blade Edge

Tip material	Part no.
T.Carbide	008305-031



4 x 11mm Knife Edge

Tip material	Part no.
T.Carbide	008305-036